



*McCulloch - Watson*  
**FUNERAL HOME LTD.**

**Licence #FE-129** Funeral Establishment Operator – Class 1

Licensed by Bereavement Authority of Ontario

[www.thebao.ca](http://www.thebao.ca)

**166 Bruce Street North, P.O. Box 50, Durham, Ontario N0G 1R0**

**[www.mccullochwatsonfuneralhome.ca](http://www.mccullochwatsonfuneralhome.ca)**

**[info@mwfh.ca](mailto:info@mwfh.ca)**

**Telephone: 519-369-3837 or 1-855-369-3837**

**Facsimile: 519-369-6707**

**Effective date: March 1, 2024**

**The Person in Charge of Day to Day Operations is  
Dawn McNab – Managing Funeral Director/Owner**

**We hope that the information provided in our price list is helpful to you,  
if you have any questions or concerns, please ask.**

**Additional information is available upon request.**

**Taxes are not included in the prices listed. HST will be added to the applicable items.**

Below is the link for the online consumer information guide set out by the  
Bereavement Authority of Ontario for your family to reference.

<https://thebao.ca/for-consumers/consumer-information-guide/>

# PROFESSIONAL SERVICE FEES

## **Basic professional fees** *(requires Basic Facility Charge)*

Professional consultation with licensed personnel, which may include but is not limited to, expert advice on options to meet your needs, including essential services relating to disposition, drafting notices, planning and scheduling of services, advice regarding possible government benefits. The basic professional fee is payable whenever we provide services to you.

**\$775.00 - \$1,425.00**

## **Co-ordinating rites and ceremonies**

Co-ordination of all rites and ceremonies, before, during and after they have been provided, including services and supplies provided by us, as well as those provided by third-party suppliers, such as flowers and death notices.

**\$350.00 - \$550.00**

## **Documentation – permits, forms, etc.**

Completion and filing of all documents necessary to carry out the services and supplies requested, including, but not limited to, death registration, burial permit, coroner's certificate for cremation, documentation necessary to ship the body out of the country. As part of this service, we will provide you with 12 proof of death certificates; such certificates are usually accepted for most estate settlement purposes, but sometimes a provincial Death Certificate will be necessary and is available from the Office of the Registrar General.

**\$500.00**

## **Transport remains**

Transportation of the remains from one place to another, for example the hospital to our premises, or from our premises to the cemetery or crematorium using a transfer vehicle, for distances not exceeding 25 km a charge applies for each transportation request.

**\$300.00**

## **Transport of remains between 10 p.m. and 6 a.m.** (in addition to Transport remains)

This fee is charged for removals that occur between the hours of 10 p.m. and 6 a.m.)

**\$200.00**

## **Basic preparation of remains** *(requires Facilities for preparation / embalming / shelter)*

The preparation of the body for placement into the casket, including bathing, dressing and the setting of facial features for identification or viewing without embalming. This will also include the removal of pacemaker or other implants for cremation.

**\$250.00**

## **Embalming of remains** *(in addition to basic preparation of remains)*

Embalming is the process of replacing blood and bodily fluids with chemical preservatives. It is a process of sanitation, restoration and temporary preservation. Embalming is not legally required but may be recommended to preserve the body between the time of death and the visitation or disposition of the deceased. Our professional funeral directors will make a recommendation based on the condition of the body and expected service needs.

**\$500.00**

## **Embalming following an autopsy**

**\$600.00**

## **Staff services for visitation**

Staff to coordinate and oversee the visitation (informal gathering) at our premises or at an offsite location.

**\$200.00 - \$600.00**

*Additional charge for staff for additional visitation period(s) will be charged at \$150.00 per hour.*

## **Staff services for ceremony**

Staff to coordinate and oversee the ceremony or memorial at our premises or at an offsite location for a period of up to 2 hours.

**\$200.00**

*Additional charge for staff for time period over 2 hours will be charged at \$150.00 per hour.*

## **Staff Services for Reception**

Staff to oversee and assist with on site reception for a period of up to 2 hours.

**\$200.00**

*Additional charge for receptions lasting over 2 hours will be charged at \$150.00 per hour.*

## **Facilities for preparation/embalming/shelter**

Facilities used to prepare, embalm and/or shelter the body; this charge applies whenever the body is at our facility for any purpose.

**\$500.00**

## **Facilities and/or Equipment for visitation** *(requires Staff services for visitation)*

Designated facilities used for public visitation and one hour of family visitation.

**\$300.00 - \$900.00**

*Minimum charge of \$200.00 for a one hour private family viewing.*

*Additional charge for facilities for additional visitation period(s) will be charged at \$100.00 per hour.*



*McCulloch-Watson*  
FUNERAL HOME LTD.

**Facilities and/or Equipment for ceremony** (requires Staff services for ceremony)

Designated facilities at our Funeral Home used for the ceremony or memorial service. This includes use of the building for up to 2 hours per ceremony. Equipment needed for a ceremony to be held at an offsite location.

**\$200.00**

*Additional time will be charged at \$100.00 per hour.*

**Delayed burial**

This fee will apply when the burial does not take place immediately following the funeral or memorial service. This could be due to the cemetery being closed during the winter months, or having a reception following the ceremony.

**\$250.00**

*Spring interments will not be scheduled for a Saturday, Sunday or a Statutory Holiday.*

**Weekend/Holiday surcharge**

This fee will apply for any services offered by our Funeral Home (visitation, funeral or memorial service, celebration of life, burial, etc.) held on a weekend (Saturday and/or Sunday) or a holiday. This fee will be charged on a per day basis.

**\$500.00 per day****Delayed memorial visitation and/or memorial service**

This fee is charged when families choose to delay a memorial visitation or memorial service for longer than 7 days after the date of death.

**\$500.00****Delayed visitation and/or service with embalmed remains**

This fee is charged when families choose to delay a visitation and/or service with embalmed remains present for longer than 5 days after the date of death.

**\$150.00 per day****Reception facilities**

Use of facilities for a reception following the ceremony or memorial service, which includes the set up of the facilities, the use of the facilities and amenities for up to 2 hours.

**\$200.00**

*Additional time will be charged at \$100.00 per hour.*

**SOP Permit**

Coordinating and obtaining a Special Occasion Permit and necessary supplies. This one-time charge covers insurance for the event, smart serve staff at the Funeral Home, the pick-up, payment and return of all alcohol and supplies. This does NOT include the cost of the SOP, the cost of the alcohol or the supplies. These expenses will be billed as a disbursement. Please note some off-site locations require their own paid staff and this cost will also be billed as a disbursement expense.

**\$250.00****Funeral Coach****\$250.00****Clergy/Lead Vehicle****\$100.00****General Duty Vehicle****\$300.00**

**Additional mileage-** mileage travelled beyond 25 km from our facility will be charged at \$2.50 per km for funeral coach and \$1.75 per km for all other vehicles.

**Full Tribute Package** Includes guest/register book, up to 100 colour memorial folders and up to 100 Thank You cards, 1 Memorial Photo Slideshow

**\$200.00**

**Deluxe Tribute Package:** Includes custom guest/register book, up to 100 colour memorial folders and up to 100 Thank You cards, 1 Memorial Photo Slideshow

**\$300.00**

<b>Standard Register book</b>	<b>\$75.00</b>	<b>Production of photo slideshow (up to 50 photos)</b>	<b>\$75.00</b>
<b>Deluxe Register book</b>	<b>\$175.00</b>	<b>Additional photos (over 50 photos)</b>	<b>\$1.00/ photo</b>
<b>Colour Memorial Folders</b>	<b>\$1.00 each</b>	<b>Additional copy of photo slideshow (DVD or USB)</b>	<b>\$20.00</b>
<b>Thank You card and envelope</b>	<b>\$1.00 each</b>	<b>Legacy photo tribute book</b>	<b>\$125.00</b>
<b>Video recording of service (on or offsite)</b>	<b>\$200.00</b>	<b>Uploading of photo slideshow or recording of service to the Funeral Home website</b>	<b>No Charge</b>

**Shipment of cremated remains within Ontario****\$50.00**

**Refundable Deposit for Cremated Remains** – When human remains are to be cremated, payment of a refundable deposit may be required. If the cremated remains are not claimed within one year of the cremation, the deposit may be used to inter the cremated remains in common ground in a cemetery of the funeral home's choosing. If the cremated remains are claimed before they are interred, the deposit will be refunded.

**\$350.00**

*McCulloch-Watson*  
FUNERAL HOME LTD.

# PACKAGE PRICES

***\*\*Early Pay Discount pricing is applicable on all Packages  
if account is paid in FULL within 15 days from the date of the contract\*\****

## **Plan A - Visitation and Ceremony over 3 days**

One hour of family visitation and up to eight hours of public visitation over the course of two days.  
Funeral Service to be held the following day (either at our premise or off site).

	<b>\$6,575.00</b>
<b>Early Pay Discount</b>	<b>\$6,350.00</b>

## **Plan B - Visitation and Ceremony over 2 days**

One hour of family visitation and up to four hours of public visitation on one day.  
Funeral Service to be held the following day (either at our premise or off site).

	<b>\$6,075.00</b>
<b>Early Pay Discount</b>	<b>\$5,850.00</b>

## **Plan C - Visitation and Ceremony over 1 day**

One hour of family visitation and up to two hours of public visitation with  
Funeral Service to be held immediately following visitation (either at our premise or off site).

	<b>\$5,575.00</b>
<b>Early Pay Discount</b>	<b>\$5,350.00</b>

## **Plan D - Cremation with Memorial Ceremony**

Memorial Service (either at our premise or off site) for up to two hours.

	<b>\$4,325.00</b>
<b>Early Pay Discount</b>	<b>\$4,175.00</b>

## **Plan E - Direct Burial with Graveside Service**

Direct burial with a graveside service. No viewing.

	<b>\$4,425.00</b>
<b>Early Pay Discount</b>	<b>\$4,325.00</b>

## **Plan F - Direct Cremation with Graveside Service**

Direct cremation with a graveside service. No viewing.

	<b>\$3,775.00</b>
<b>Early Pay Discount</b>	<b>\$3,700.00</b>

## **Plan G - Direct Burial**

Direct burial. No viewing and no service.

	<b>\$3,575.00</b>
<b>Early Pay Discount</b>	<b>\$3,525.00</b>

## **Plan H - Direct Cremation**

Direct cremation. No viewing and no service.

	<b>\$2,625.00</b>
<b>Early Pay Discount</b>	<b>\$2,575.00</b>



*McCulloch-Watson*  
FUNERAL HOME LTD.

<b>Service Packages as of March 1, 2024</b>	<b>Plan A</b>	<b>Plan B</b>	<b>Plan C</b>	<b>Plan D</b>
Basic Professional Services	1425	1425	1425	1425
Coordinating activities, rites, ceremonies	550	550	550	550
Documentation - permits, forms, etc.	500	500	500	500
Transport remains - initial 25 km	300	300	300	300
Basic preparation of remains	250	250	250	250
Embalming of remains	500	500	500	
Staff services for visitation	600	400	200	
Staff services for ceremony and/or burial	200	200	200	200
Facilities for preparation/embalming/shelter	500	500	500	500
Facilities for visitation	900	600	300	
Facilities and/or equipment for ceremony	200	200	200	200
Clergy/lead car	100	100	100	100
Funeral coach/conveyance vehicle	250	250	250	
General duty vehicle	300	300	300	300
Itemized Total	\$ 6,575.00	\$ 6,075.00	\$5,575.00	\$ 4,325.00
Early Payment Discount available if paid in full within 15 days	-225	-225	-225	-150
Package Price (if paid in full within 15 days)	\$ 6,350.00	\$ 5,850.00	\$ 5,350.00	\$ 4,175.00

<b>Service Packages as of March 1, 2024</b>	<b>Plan E</b>	<b>Plan F</b>	<b>Plan G</b>	<b>Plan H</b>
Basic Professional Services	1075	1075	775	775
Coordinating activities, rites, ceremonies	350	350		
Documentation - permits, forms, etc.	500	500	500	500
Transport remains - initial 25 km	300	300	300	300
Basic preparation of remains	250	250	250	250
Embalming of remains	500		500	
Staff services for visitation				
Staff services for ceremony and/or burial	200	200	200	
Facilities for preparation/embalming/shelter	500	500	500	500
Facilities for visitation				
Facilities and/or equipment for ceremony	200	200		
Clergy/lead car		100		
Funeral coach/conveyance vehicle	250		250	
General duty vehicle	300	300	300	300
Funeral stationery				
Itemized Total	\$ 4,425.00	\$ 3,775.00	\$ 3,575.00	\$ 2,625.00
Early Payment Discount available if paid within 15 days	-100	-75	-50	-50
Package Price (if paid in full within 15 days)	\$ 4,325.00	\$ 3,700.00	\$ 3,525.00	\$ 2,575.00

# DISBURSEMENTS

Disbursements are items arranged for and possibly paid for on your behalf by us. You are expected to pay for these items at the time the contract is entered into. The following are some items that are often identified as disbursements. All fees listed below are subject to change without notification (fees will change periodically from suppliers)

**Bereavement Authority of Ontario Consumer Protection Fee** **\$30.00**

**Cemetery Charges** – each cemetery has their own fee structure and their fees will be quoted to you based on the services needed.

**Cremation Fee** – Southwest Crematoriums Ltd. **\$550.00**

**Coroner's cremation certificate** – this is a fee charged by the coroner for issuing a certificate that allows cremation to take place. The fee is set by the Chief Coroner for Ontario. **\$75.00**

**Clergy honorarium** – this is an amount paid to the clergy for their services. We suggest an honorarium amount of \$200, but in some cases the amount is set by the clergy, in others it is an amount to be determined by you.

**Suggested amount is \$200.00**

**Newspaper or radio notices** – there are a number of local newspaper and radio options available to you. Below is a list of common choices for our area.

**Daily Newspapers** one announcement **ESTIMATE** only for

Owen Sound Sun Times	<b>\$350.00</b>
K-W Record	<b>\$350.00</b>
Toronto Star	<b>\$600.00</b>
Globe and Mail	<b>\$1,000.00</b>

**Weekly Newspapers**

Guelph Mercury	<b>\$250.00</b>
The Post	<b>\$50.00</b>
The Post with photo	<b>\$64.50</b>
Wellington Advertiser	<b>\$100.00 or \$150.00</b>
Dundalk Herald/Flesherton Advance	<b>\$100.00</b>

**Radio**

CKNX Radio (12:55 p.m.) one announcement	<b>\$60.00</b>
each additional announcement	<b>\$40.00</b>
CFOS Radio (approx. 11:55 a.m. and 4:55 p.m.)	
one announcement <b>\$90.00</b>	two announcements <b>\$140.00</b>
three announcements <b>\$175.00</b>	four announcements <b>\$190.00</b>

**Municipal death registration fee** – this is a fee charged by the local municipality to register a death. **\$30.00**

**Organist or Bagpiper** **\$75.00 - \$150.00**

**Funeral Luncheons** – pricing is per person rate and you are responsible to pay for the number that is arranged with the caterer. **\$10.00 - \$12.50**

**\*\*special menu requests for funeral luncheon will be subject to special pricing\*\***

### **Tax**

Harmonized Sales Tax (HST) at a rate of 13% is applicable to the Funeral Home fees, the merchandise and most cash disbursements and it will be added to the account for all applicable items. Generally, the items which are HST exempt are: coroner's cremation certificate and the municipal death registration fee. All other fees are subject to HST.

### **Payment, financing and funding**

We are proud to offer various payment funding and financing options to our clients.

#### **Payment**

Unless otherwise specified, payment is due within 30 days of signing the contract. Payment may be made by cash, cheque or e-transfer. Payment plans are also available to meet most budgets. Financing charges apply to payment plans. Beyond the allotted time, interest will be charged at a rate of 2%, which is equivalent to 26.82% per annum (APR).

#### **Assistance**

Assistance with funeral expenses MAY be available through the Last Post Fund or with a County Social Services Department.

---

## **PREPAYMENT OPTIONS**

### **Financing for prepayment plans**

Our payment plans give you the option of making payments over time. We offer a competitive financing program, administration fees and interest rates. If you are prepaying for services or supplies, pre-authorized chequing is also available.

### **Funding**

For your convenience, we offer two funding options when prepaying services or supplies. When prepaying, you pay for the services and supplies today and the money will be used to pay for the services and supplies when they are delivered at the time of death.

### **Trust**

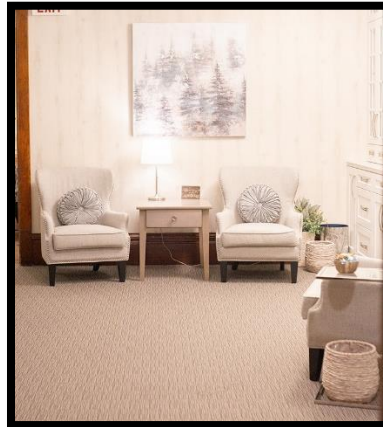
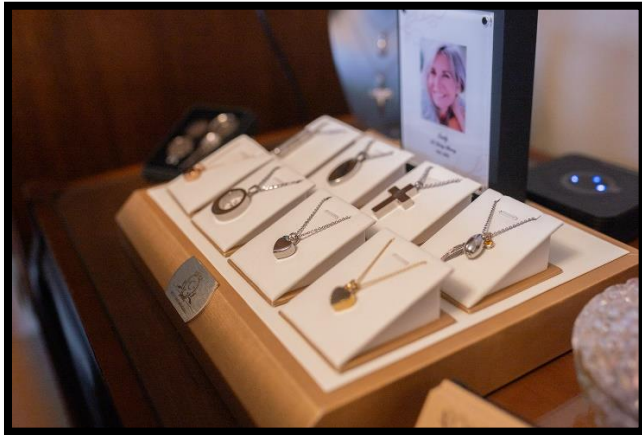
You may pay the money directly to us and we will place it in trust, where it will accrue interest until the contract is fulfilled (when the services and supplies are delivered) or the contract is cancelled. Funds placed in trust will cover the Funeral Home Professional Services and merchandise.

### **Insurance**

You may purchase an insurance contract where the proceeds of the insurance contract will be used to pay for the services or supplies at the time they are delivered or the contract is cancelled. Other expenses, disbursement items, can be prepaid in an insurance funded policy.

**Proudly Affiliated with**  
**OFSA (Ontario Funeral Service Association)**  
**GFD (Guaranteed Funeral Deposits)**  
**FPC (Funeral Plans-Canada)**  
**GBFSA (Georgian Bay Funeral Service Association)**







# Casket Selection

*All caskets listed are "Adult" caskets. Youth and Plus Size caskets are available and further information and pricing is available upon consumer request.*



**The Parliament** by Victoriaville  
#WR210-20848  
Red Oak  
1" and 2" stock timber  
Ivory velvet interior

**\$6,500.00**



**The Dominion** by Victoriaville  
#WR220-00379  
Maple  
1" stock timber  
Tan crepe interior

**\$3,825.00**



**The Simcoe** by Victoriaville  
#WC212-00002  
Red Oak  
1" stock timber  
Tan crepe interior  
*\*\*Interchangeable corner option available\*\**

**\$3,725.00**



**The Fairholme** by Victoriaville  
#WR210-00195  
Red Oak  
1" stock timber  
Dusty pink crepe interior

**\$3,725.00**



*McCulloch-Watson*  
FUNERAL HOME LTD.

# Casket Selection

*All caskets listed are "Adult" caskets. Youth and Plus Size caskets are available and further information and pricing is available upon consumer request.*



**The Maxima** by Victoriaville

#WC212-00003

Red Oak

1" stock timber

Tan crepe interior

*\*\*Interchangeable corner option available\*\**

**\$3,625.00**



**The Homeward** by Victoriaville

#WC252-00009

Poplar and veneer,

1" stock timber and 5/8" material

Tan crepe interior

*\*\*Interchangeable corner option available\*\**

**\$3,225.00**



**The Trentfield** by Victoriaville

#WC252-00011

Poplar and veneer

1" stock timber and 5/8" material

Tan crepe interior

*\*\*Interchangeable corner option available\*\**

**\$3,200.00**



**The Weston** by Victoriaville

#WR212-00342

Oak and veneer

1" stock timber and 5/8" material

Beige crepe interior

**\$3,100.00**



*McCulloch-Watson*  
FUNERAL HOME LTD.

## Casket Selection

*All caskets listed are "Adult" caskets. Youth and Plus Size caskets are available and further information and pricing is available upon consumer request.*



**The Digby** by Victoriaville  
#WR232-00429  
Ash and Ash veneer,  
1" stock timber and 5/8" material  
Tan crepe interior

**\$2,825.00**



**The Borealis** by Victoriaville  
#WR232-00359  
Ash and veneer  
1" stock timber  
Beige crepe interior

**\$2,300.00**



**The Ashton** by Victoriaville  
#WR232-00418  
Ash and veneer  
1" stock timber and 5/8" material  
Beige crepe interior

**\$2,300.00**



**The Puma** by Victoriaville  
#WR252-00180  
Poplar and veneer  
1" stock timber and 5/8" material  
Beige crepe interior

**\$2,200.00**



*McCulloch-Watson*  
FUNERAL HOME LTD.

# Casket Selection

*All caskets listed are "Adult" caskets. Youth and Plus Size caskets are available and further information and pricing is available upon consumer request.*



**The Winston** by Victoriaville  
#DR220-00044  
MDF 5/8" material  
Blue figured cloth exterior  
White silk interior

**\$1,250.00**



**The Hampton** by Victoriaville  
#DR520-00033  
MDF 5/8" material  
Gray cloth exterior  
White silk interior

**\$825.00**



AVAILABLE IN OVERSIZE / DISPONIBLE EN SURDIMENSIONNÉ

**The Glenbar** by Victoriaville  
#CR580-00012  
Solid select wood  
White crepe interior

**\$700.00**



**The Glencove** by Victoriaville  
#CR879-00033  
Solid select wood  
Natural maple woodgrain  
White crepe interior

**\$525.00**



*McCulloch-Watson*  
FUNERAL HOME LTD.



# Casket Selection

*All caskets listed are "Adult" caskets. Youth and Plus Size caskets are available and further information and pricing is available upon consumer request.*



## **Combo Tray by SWC**

#CC-144 (24")

Wood base with cardboard lid

No interior

**\$250.00**

## **AVAILABLE IN OVERSIZE**

## **Combo Tray Oversize 30"**

#CC-144 (30")

Wood base with cardboard lid

No interior

**\$425.00**



## **RENTAL CASKET**



## **The Homestead by Northern Caskets**

#707

Ceremonial multi use rental casket

Solid maple exterior shell

*The exterior shall has been used before  
and may be used again*

**\$1,650.00**

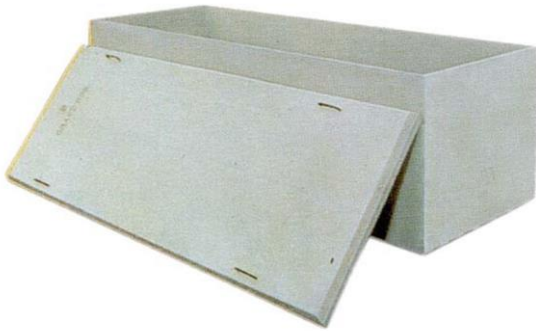
The rental casket includes an adult standard single use container for final disposition (shown below) which is constructed of solid poplar with a tan crepe interior.



**McCulloch-Watson**  
FUNERAL HOME LTD.

# Vault Selection

*All vaults listed are "Adult" vaults. Youth and Plus Size vaults are available and further information and pricing is available upon consumer request.*



**Liner** by OSVW (Owen Sound Vault Works)

#STL

Concrete

2 piece non-sealing unit

**\$1,400.00**



**Standard Vault** by OSVW

#STV

Concrete

2 piece sealing unit

Plaque with name and years of birth and death

Painted gold

**\$1,625.00**



**Oxford Vault** by OSVW

#OXV

Concrete with inner fibreglass lining

2 piece sealing unit

Plaque with name and years of birth and death

Painted gold

**\$1,925.00**



**Grass and Device** supplied by OSVW

without the use of a concrete outer container

**\$500.00**

**Holiday surcharge fee for outer containers**

For burials being held on a Statutory Holiday, an additional fee will be added to the selected outer burial container.

**\$500.00**



*McCulloch-Watson*  
FUNERAL HOME LTD.



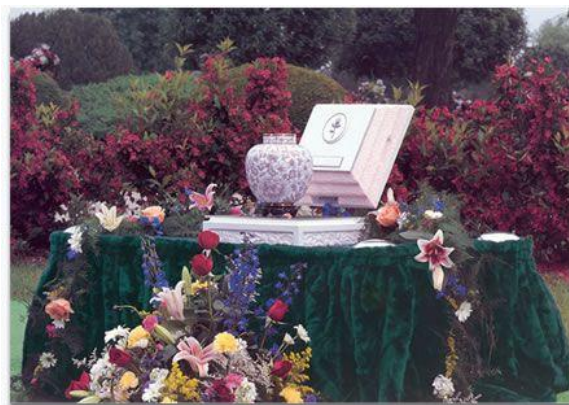
# Cremation Vault Selection

*Suitable for Adult and Youth.*



**Sandstone** by Victoriaville  
#G0000-20023  
Polyethylene with a sandstone finish

**\$360.00**



Cremation vaults not only protect the cremated remains of your loved one but they also allow for special items to be placed with the cremated remains at the time of the interment.



**Aegean** by Haberer Interment Services

Concrete encased with 2 layers of high impact Polystyrene  
White simulated marble exterior  
Personalized colour lid with image, name and years of birth and death

**\$725.00**



*McCulloch-Watson*  
FUNERAL HOME LTD.

# Urn Selection

Further information, options and pricing is available upon consumer request.

We have chosen to offer urn options to the consumer by catalogue. This allows you to choose what suits your needs and preferences best.

Below is a link to Victoriaville & Co cremation options catalogue.

[https://victoriaville.co/media/wysiwyg/documents/Catalogue\\_urnes\\_2023.pdf](https://victoriaville.co/media/wysiwyg/documents/Catalogue_urnes_2023.pdf)



**\*\*If you are planning to place the urn at a columbarium you will need to select an urn that is suitable in size for this to take place\*\***

**Allen** by Victoriaville **\$495.00**  
#US120-00003  
Solid Maple Urn



**Aria Ascending** by Victoriaville **\$520.00**  
#US440-00449  
Metal Urn



## Personalization Options

We deal with a number of companies that offer unique personalization for keepsake items with or without cremated remains.

Additional options and pricing is available upon request.



Shown above is one example of blown glass jewellery that contains cremated remains.



Keepsake items available with laser imaging.  
Available with or without a cremated remains compartment.

Bailey and Bailey (a USA company)  
<https://www.baileyandbailey.com/>

Eternity's Touch  
<https://www.eternitystouch.com/>

Loved Remembered  
<https://www.lovedremembered.com/>

West Coast Memorials  
<https://www.westcoastmemorials.ca/>



*McCulloch-Watson*  
FUNERAL HOME LTD.