



McCulloch - Watson
FUNERAL HOME LTD.

Licence #FE-129 Funeral Establishment Operator – Class 1

Licensed by Bereavement Authority of Ontario

www.thebao.ca

166 Bruce Street North, P.O. Box 50, Durham, Ontario N0G 1R0

www.mccullochwatsonfuneralhome.ca

mwfh@eastlink.ca

Telephone: 519-369-3837 or 1-855-369-3837

Facsimile: 519-369-6707

Effective date: November 24, 2022

**The Person in Charge of Day to Day Operations is
Dawn McNab – Managing Funeral Director/Owner**

**We hope that the information provided in our price list is helpful to you,
if you have any questions or concerns, please ask.**

Additional information is available upon request.

Taxes are not included in the prices listed. HST will be added to the applicable items.

Below is the link for the online consumer information guide set out by the
Bereavement Authority of Ontario for your family to reference.

<https://thebao.ca/for-consumers/consumer-information-guide/>

PROFESSIONAL SERVICE FEES

Basic professional fees *(requires Basic Facility Charge)*

Professional consultation with licensed personnel, which may include but is not limited to, expert advice on options to meet your needs, including essential services relating to disposition, drafting notices, planning scheduling of services, advice regarding possible government benefits. The basic professional fee is payable whenever we provide services to you.

\$1,375.00 - \$1,525.00

Co-ordinating rites and ceremonies

Co-ordination of all rites and ceremonies, before, during and after they have been provided, including services and supplies provided by us, as well as those provided by third party suppliers, such as flowers and death notices.

\$500.00 - \$1,000.00

Documentation – permits, forms, etc.

Completion and filing of all documents necessary to carry out the services and supplies requested, including, but not limited to, death registration, burial permit, coroner's certificate for cremation, documentation necessary to ship the body out of the country. As part of this service, we will provide you with 12 proof of death certificates; such certificates are usually accepted for most estate settlement purposes, but sometimes a provincial Death Certificate will be necessary and is available from the Office of the Registrar General.

\$300.00

Transport remains

Transportation of the remains from one place to another, for example the hospital to our premises, or from our premises to the cemetery or crematorium using a transfer vehicle, for distances not exceeding 25 km a charge applies for each transportation request

\$200.00

Basic preparation of remains *(requires Facilities for preparation / embalming / shelter)*

The preparation of the body for placement into the casket, including bathing, dressing and the setting of facial features for identification or viewing without embalming. This will also include the removal of pacemaker or other implants for cremation.

\$200.00

Embalming of remains *(in addition to basic preparation of remains)*

Embalming is the process of replacing blood and bodily fluids with chemical preservatives. It is a process of sanitation, restoration and temporary preservation. Embalming is not legally required but may be recommended to preserve the body between the time of death and the visitation or disposition of the deceased. Our professional funeral directors will make a recommendation based on the condition of the body and expected service needs.

\$400.00

Staff services for visitation

Staff to coordinate and oversee the visitation (informal gathering) at our premises or at an off site locations

\$200.00 - \$600.00

Additional charge for staff for additional visitation period(s) will be charged at \$100.00 per hour.

Staff services for ceremony

Staff to coordinate and oversee the ceremony or memorial at our premises or at an off site location for a period of up to 3 hours.

\$200.00

Additional charge for staff for time period over 3 hours will be charged at \$100.00 per hour.

Staff Services for Reception

Staff to oversee and assist with on site reception for a period of up to 2 hours.

\$200.00

Additional charge for receptions lasting over 2 hours will be charged at \$100.00 per hour.

Facilities for preparation/embalming/shelter

Facilities used to prepare, embalm and/or shelter the body; this charge applies whenever the body is in at facility for any purpose.

\$200.00

Facilities and/or Equipment for visitation (requires Staff services for visitation)

Designated facilities used for public visitation and one hour of family visitation.

Minimum charge of \$200.00 for a one hour private family viewing.

\$200.00 - \$600.00

Additional charge for facilities for additional visitation period(s) will be charged at \$100.00 per hour.

Facilities and/or Equipment for ceremony (requires Staff services for ceremony)

Designated facilities at our Funeral Home used for the ceremony or memorial service.

Equipment for needed for ceremony at an off site location.

This includes use of the building for up to 2 hours per ceremony.

\$200.00

Additional time will be charged at \$100.00 per hour.

Delayed visitation and/or service

This fee is charged when families choose to delay a visitation and/or service with remains present for longer than 5 days after the date of death.

\$100.00 per day

Reception facilities

Use of facilities for a reception following the ceremony or memorial service, which includes the set up of the facilities, the use of the facilities and amenities for up to 2 hours.

\$200.00

Additional time will be charged at \$100.00 per hour.

VEHICLES**Funeral Coach**

\$250.00

Mileage travelled beyond 25 km from our facility will be charged at \$ \$2.50 per km for funeral coach.

Clergy/Lead Vehicle

\$100.00

Mileage travelled beyond 25 km from our facility will be charged at \$ \$1.75 per km for clergy/lead vehicle.

General Duty Vehicle

\$200.00

Mileage travelled beyond 25 km from our facility will be charged at \$ \$1.75 per km for general duty vehicle.



McCulloch-Watson
FUNERAL HOME LTD.

PACKAGE PRICES

*****Early Pay Discount pricing is applicable on all Packages
if account is paid in FULL within 15 days from the date of the contract*****

Plan A - Visitation and Ceremony over 3 days

One hour of family visitation and up to eight hours of public visitation over the course of two days.
Funeral Service to be held the following day (either at our premise or off site).

	\$6,175.00
Early Pay Discount	\$5,950.00

Plan B - Visitation and Ceremony over 2 days

One hour of family visitation and up to four hours of public visitation on one day.
Funeral Service to be held the following day (either at our premise or off site).

	\$5,775.00
Early Pay Discount	\$5,550.00

Plan C - Visitation and Ceremony over 1 day

One hour of family visitation and up to two hours of public visitation with
Funeral Service to be held immediately following visitation (either at our premise or off site).

	\$5,375.00
Early Pay Discount	\$5,150.00

Plan D - Cremation with Memorial Ceremony

Memorial Service (either at our premise or off site) for up to two hours.

	\$4,325.00
Early Pay Discount	\$4,175.00

Plan E - Direct Burial with Graveside Service

Direct burial with a graveside service. No viewing.

	\$4,175.00
Early Pay Discount	\$4,075.00

Plan F - Direct Cremation with Graveside Service

Direct cremation with a graveside service. No viewing.

	\$3,625.00
Early Pay Discount	\$3,550.00

Plan G - Direct Burial

Direct burial. No viewing and no service.

	\$3,325.00
Early Pay Discount	\$3,275.00

Plan H - Direct Cremation

Direct cremation. No viewing and no service.

	\$2,475.00
Early Pay Discount	\$2,425.00

Service Packages as of September 1, 2022	Plan A	Plan B	Plan C	Plan D
Basic Professional Services	1525	1525	1525	1525
Coordinating activities, rites, ceremonies	1000	1000	1000	1000
Documentation - permits, forms, etc.	300	300	300	300
Transport remains - initial 25 km	200	200	200	200
Basic preparation of remains	200	200	200	200
Embalming of remains	400	400	400	
Staff services for visitation	600	400	200	
Staff services for ceremony and/or burial	200	200	200	200
Facilities for preparation/embalming/shelter	200	200	200	200
Facilities for visitation	600	400	200	
Facilities and/or equipment for ceremony	200	200	200	200
Clergy/lead car	100	100	100	100
Funeral coach/conveyance vehicle	250	250	250	
Service/utility vehicle	200	200	200	200
Funeral stationery	200	200	200	200
Itemized Total	\$ 6,175.00	\$ 5,775.00	\$ 5,375.00	\$ 4,325.00
Early Payment Discount available if paid in full within 15 days	-225	-225	-225	-150
Package Price (you pay)	\$ 5,950.00	\$ 5,550.00	\$ 5,150.00	\$ 4,175.00

Service Packages as of May 22, 2020	Plan E	Plan F	Plan G	Plan H
Basic Professional Services	1525	1525	1375	1375
Coordinating activities, rites, ceremonies	500	500		
Documentation - permits, forms, etc.	300	300	300	300
Transport remains - initial 25 km	200	200	200	200
Basic preparation of remains	200	200	200	200
Embalming of remains	400		400	
Staff services for visitation				
Staff services for ceremony and/or burial	200	200	200	
Facilities for preparation/embalming/shelter	200	200	200	200
Facilities for visitation				
Facilities and/or equipment for ceremony	200	200		
Clergy/lead car		100		
Funeral coach/conveyance vehicle	250		250	
Service/utility vehicle	200	200	200	200
Funeral stationery				
Itemized Total	\$ 4,175.00	\$ 3,625.00	\$ 3,325.00	\$ 2,475.00
Early Payment Discount available if paid within 15 days	-100	-75	-50	-50
Package Price (you pay)	\$ 4,075.00	\$ 3,550.00	\$ 3,275.00	\$ 2,425.00

DISBURSEMENTS

Disbursements are items arranged for and possibly paid for on your behalf by us. You are expected to pay for these items at the time the contract is entered into. The following are some items that are often identified as disbursements. All fees listed below are subject to change without notification (fees will change periodically from suppliers)

Coroner's fee – this is a fee charged by the coroner for issuing a certificate that allows cremation to take place. The fee is set by the Chief Coroner for Ontario. **\$75.00**

Clergy honorarium – this is an amount paid to the clergy for their services. We suggest an honorarium amount of \$200, but in some cases the amount is set by the clergy, in others it is an amount to be determined by you. **Suggested amount is \$200.00**

Newspaper or radio notices – there are a number of local newspaper and radio options available to you. Below is a list of common choices for our area.

Daily Newspapers one announcement ESTIMATE only for			
Owen Sound Sun Times			\$350.00
K-W Record			\$350.00
Toronto Star			\$600.00
Globe and Mail			\$1,000.00
Weekly Newspapers			
Guelph Mercury			\$250.00
The Post			\$50.00
The Post with photo			\$60.00
Wellington Advertiser			\$67.00
Dundalk Herald/Flesherton Advance			\$100.00
Radio			
CKNX Radio (12:55 p.m.) one announcement			\$60.00
each additional announcement			\$40.00
CFOS Radio (approx. 11:55 a.m. and 4:55 p.m.)			
one announcement	\$90.00	two announcements	\$140.00
three announcements	\$175.00	four announcements	\$190.00

Cemetery Charges – each cemetery has their own fee structure and their fees will be quoted to you based on the services needed.

Cremation Fee **\$495.00**

Municipal death registration fee – this is a fee charged by the local municipality to register the death if the death occurred outside of the Municipality of West Grey. **\$20.00**

Organist or Bagpiper **\$75.00 - \$150.00**

Funeral Luncheons – pricing is per person rate and you are responsible to pay for the number that is arranged with the caterer. **\$8.00 - \$12.50**

special menu requests for funeral luncheon will be subject to special pricing

Tax

Harmonized Sales Tax (HST) at a rate of 13% is applicable to the Funeral Home fees, the merchandise and most cash disbursements and it will be added to the account for all applicable items. Generally, the items which are HST exempt are: coroner's cremation certificate and the municipal death registration fee. All other fees are subject to HST.

Payment, financing and funding

We are proud to offer various payment funding and financing options to our clients.

Payment

Unless otherwise specified, payment is due within 30 days of signing the contract. Payment may be made by cash, cheque or e-transfer. Payment plans are also available to meet most budgets. Financing charges apply to payment plans. Beyond the allotted time, interest will be charged at a rate of 2%, which is equivalent to 26.82% per annum (APR).

Assistance

Assistance with funeral expenses MAY be available through the Last Post Fund or with a County Social Services Department.

PREPAYMENT OPTIONS

Financing for prepayment plans

Our payment plans give you the option of making payments over time. We offer a competitive financing program, administration fees and interest rates. If you are prepaying for services or supplies, pre-authorized chequing is also available.

Funding

For your convenience, we offer two funding options when prepaying services or supplies. When prepaying, you pay for the services and supplies today and the money will be used to pay for the services and supplies when they are delivered at the time of death.

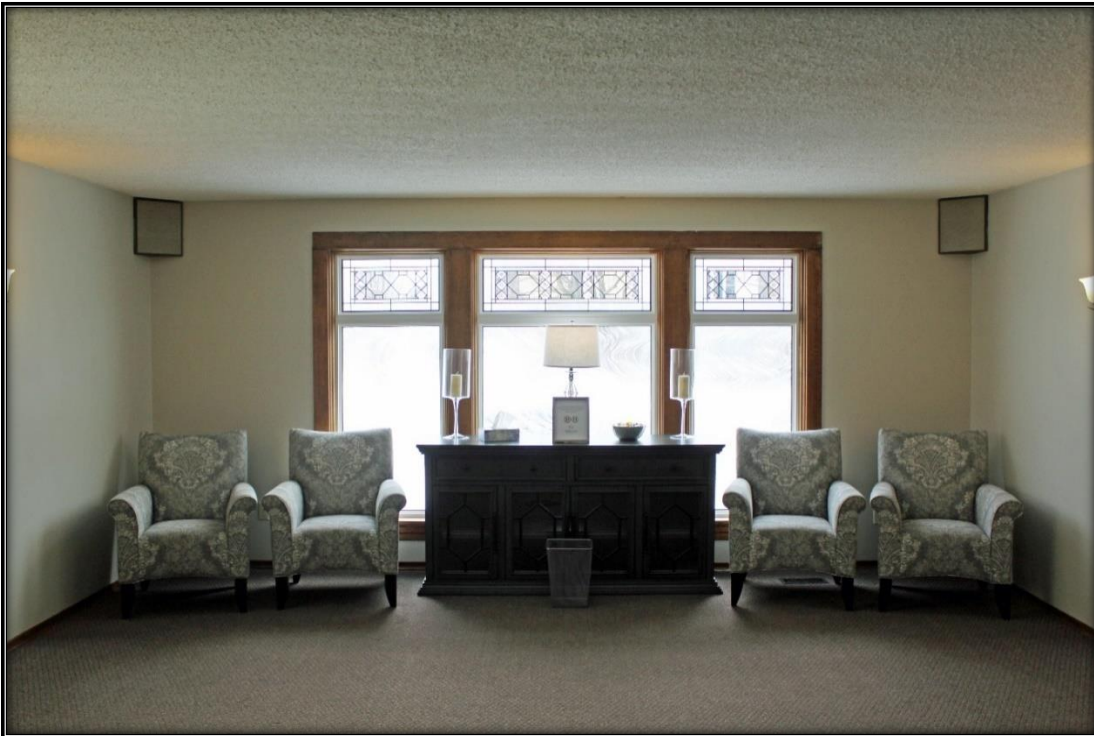
Trust

You may pay the money directly to us and we will place it in trust, where it will accrue interest until the contract is fulfilled (when the services and supplies are delivered) or the contract is cancelled. Funds placed in trust will cover the Funeral Home Professional Services and merchandise.

Insurance

You may purchase an insurance contract where the proceeds of the insurance contract will be used to pay for the services or supplies at the time they are delivered or the contract is cancelled. Other expenses, disbursement items, can be prepaid in an insurance funded policy.

Proudly Affiliated with
OFSA (Ontario Funeral Service Association)
GFD (Guaranteed Funeral Deposits)
FPC (Funeral Plans-Canada)
GBFSA (Georgian Bay Funeral Service Association)



Casket Selection

All caskets listed are "Adult" caskets. Youth and Plus Size caskets are available and further information and pricing is available upon consumer request.



The Parliament by Victoriaville
#WR210-20848
Red Oak
1" and 2" stock timber
Ivory velvet interior

\$6,500.00



The Dominion by Victoriaville
#WR220-00379
Maple
1" stock timber
Tan crepe interior

\$3,825.00



The Simcoe by Victoriaville
#WC212-00002
Red Oak
1" stock timber
Tan crepe interior
Interchangeable corner option available

\$3,725.00



The Fairholme by Victoriaville
#WR210-00195
Red Oak
1" stock timber
Dusty pink crepe interior

\$3,725.00



McCulloch-Watson
FUNERAL HOME LTD.

Casket Selection

All caskets listed are "Adult" caskets. Youth and Plus Size caskets are available and further information and pricing is available upon consumer request.



The Maxima by Victoriaville

#WC212-00003

Red Oak

1" stock timber

Tan crepe interior

Interchangeable corner option available

\$3,625.00



The Homeward by Victoriaville

#WC252-00009

Poplar and veneer,

1" stock timber and 5/8" material

Tan crepe interior

Interchangeable corner option available

\$3,225.00



The Trentfield by Victoriaville

#WC252-00011

Poplar and veneer

1" stock timber and 5/8" material

Tan crepe interior

Interchangeable corner option available

\$3,200.00



The Weston by Victoriaville

#WR212-00342

Oak and veneer

1" stock timber and 5/8" material

Beige crepe interior

\$3,100.00



McCulloch-Watson
FUNERAL HOME LTD.

Casket Selection

All caskets listed are "Adult" caskets. Youth and Plus Size caskets are available and further information and pricing is available upon consumer request.



The Digby by Victoriaville
#WR232-00429
Ash and Ash veneer,
1" stock timber and 5/8" material
Tan crepe interior

\$2,825.00



The Borealis by Victoriaville
#WR232-00359
Ash and veneer
1" stock timber
Beige crepe interior

\$2,300.00



The Ashton by Victoriaville
#WR232-00418
Ash and veneer
1" stock timber and 5/8" material
Beige crepe interior

\$2,300.00



The Puma by Victoriaville
#WR252-00180
Poplar and veneer
1" stock timber and 5/8" material
Beige crepe interior

\$2,200.00



McCulloch-Watson
FUNERAL HOME LTD.

Casket Selection

All caskets listed are "Adult" caskets. Youth and Plus Size caskets are available and further information and pricing is available upon consumer request.



The Winston by Victoriaville
#DR220-00044
MDF 5/8" material
Blue figured cloth exterior
White silk interior

\$1,250.00



The Hampton by Victoriaville
#DR520-00033
MDF 5/8" material
Gray cloth exterior
White silk interior

\$825.00



AVAILABLE IN OVERSIZE / DISPONIBLE EN SURDIMENSIONNÉ

The Glenbar by Victoriaville
#CR580-00012
Solid select wood
White crepe interior

\$700.00



The Glencove by Victoriaville
#CR879-00033
Solid select wood
Natural maple woodgrain
White crepe interior

\$525.00



McCulloch-Watson
FUNERAL HOME LTD.

Casket Selection

All caskets listed are "Adult" caskets. Youth and Plus Size caskets are available and further information and pricing is available upon consumer request.



Combo Tray by Victoriaville
#CR199-00007
Wood base with cardboard lid
No interior

\$250.00

AVAILABLE IN OVERSIZE

Combo Tray Oversize 26.5"
#CR199-00005
Wood base with cardboard lid
No interior

\$290.00

Combo Tray Oversize 32"
#CR199-00006
Wood base with cardboard lid
No interior

\$450.00



RENTAL CASKET



The Homestead by Northern Caskets
#707

Ceremonial multi use rental casket
Solid maple exterior shell

*The exterior shall has been used before
and may be used again*

\$1,650.00

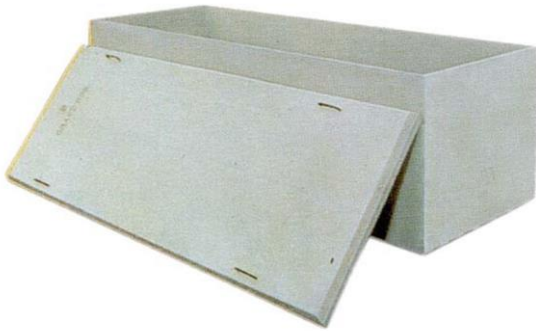
The rental casket includes an adult standard single use container for final disposition (shown below) which is constructed of solid poplar with a tan crepe interior.



McCulloch-Watson
FUNERAL HOME LTD.

Vault Selection

All vaults listed are "Adult" vaults. Youth and Plus Size vaults are available and further information and pricing is available upon consumer request.



Liner by OSVW (Owen Sound Vault Works)
#STL
Concrete
2 piece non-sealing unit

\$1,300.00



Standard Vault by OSVW
#STV
Concrete
2 piece sealing unit
Plaque with name and years of birth and death
Painted gold

\$1,525.00



Oxford Vault by OSVW
#OXV
Concrete with inner fibreglass lining
2 piece sealing unit
Plaque with name and years of birth and death
Painted gold

\$1,925.00



Grass and Device supplied by OSVW
without the use of a concrete outer container

\$350.00

Holiday Surcharge
Additional fee will be added to the selected outer burial container for interments that take place on a statutory holiday.

\$500.00



McCulloch-Watson
FUNERAL HOME LTD.

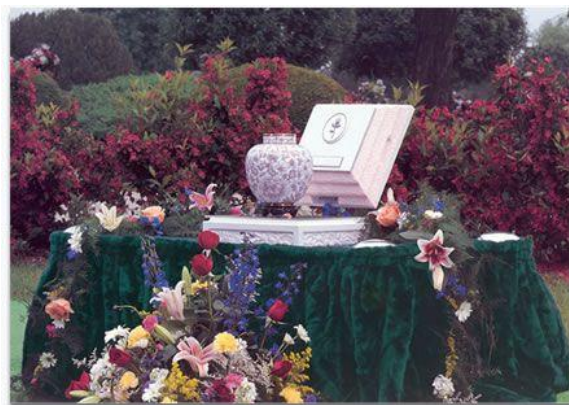
Cremation Vault Selection

Suitable for Adult and Youth.



Sandstone by Victoriaville
#G0000-20023
Polyethylene with a sandstone finish

\$375.00



Cremation vaults not only protect the cremated remains of your loved one but they also allow for special items to be placed with the cremated remains at the time of the interment.



Aegean by Haberer Interment Services

Concrete encased with 2 layers of high impact Polystyrene
White simulated marble exterior
Personalized colour lid with image, name and years of birth and death

\$725.00



McCulloch-Watson
FUNERAL HOME LTD.

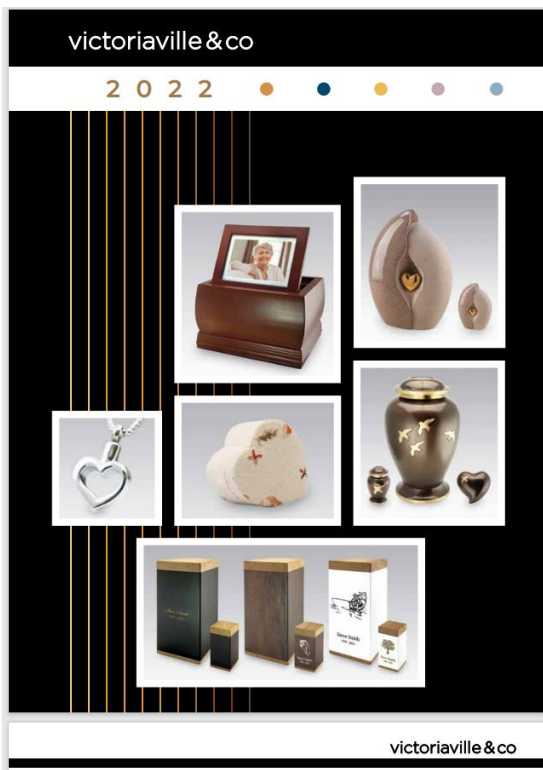
Urn Selection

Further information, options and pricing is available upon consumer request.

We have chosen to offer urn options to the consumer by catalogue. This allows you to choose what suits your needs and preferences best.

Below is a link to Victoriaville & Co cremation options catalogue.

https://victoriaville.co/pub/media/wysiwyg/documents/Catalogue_urnes_2021.pdf



****If you are planning to place the urn at a columbarium you will need to select an urn that is suitable in size for this to take place****



Allen by Victoriaville
#US120-00003
Solid Maple Urn

\$490.00



Aria Ascending Fullsize Urn by Victoriaville
#US440-00449
Metal Urn

\$490.00

Personalization Options

We deal with a number of companies that offer unique personalization for keepsake items with or without cremated remains.

Additional options and pricing is available upon request.



Shown above is one example of blown glass jewellery that contains cremated remains.



Keepsake items available with laser imaging.
Available with or without a cremated remains compartment.



McCulloch-Watson
FUNERAL HOME LTD.