



McCulloch - Watson
FUNERAL HOME LTD.

Licence #FE-129 Funeral Establishment Operator – Class 1
Licensed by Bereavement Authority of Ontario
www.thebao.ca

166 Bruce Street North, P.O. Box 50, Durham, Ontario NOG 1R0
www.mccullochwatsonfuneralhome.ca
info@mwfh.ca

Telephone: 519-369-3837 or 1-855-369-3837
Facsimile: 519-369-6707

Effective date: September 1, 2025
The Person in Charge of Day to Day Operations is
Dawn McNab – Managing Funeral Director/Owner

We hope that the information provided in our price list is helpful to you,
if you have any questions or concerns, please ask.

Additional information is available upon request.

Taxes are not included in the prices listed. HST will be added to the applicable items.

Below is the link for the online consumer information guide set out by the
Bereavement Authority of Ontario for your family to reference.

<https://thebao.ca/for-consumers/consumer-information-guide/>

PROFESSIONAL SERVICE FEES

Basic professional fees *(requires Basic Facility Charge)*

Professional consultation with licensed personnel, which may include but is not limited to, expert advice on options to meet your needs, including essential services relating to disposition, drafting notices, planning and scheduling of services, advice regarding possible government benefits. The basic professional fee is payable whenever we provide services to you. **\$600.00 - \$1,425.00**

Co-ordinating rites and ceremonies

Co-ordination of all rites and ceremonies, before, during and after they have been provided, including services and supplies provided by us, as well as those provided by third-party suppliers, such as flowers and death notices. **\$350.00 - \$550.00**

Documentation – permits, forms, etc.

Completion and filing of all documents necessary to carry out the services and supplies requested, including, but not limited to, death registration, burial permit, coroner's certificate for cremation, documentation necessary to ship the body out of the country. As part of this service, we will provide you with 12 proof of death certificates; such certificates are usually accepted for most estate settlement purposes, but sometimes a provincial Death Certificate will be necessary and is available from the Office of the Registrar General. **\$500.00**

Transport remains

Transportation of the remains from one place to another, for example the hospital to our premises, or from our premises to the cemetery or crematorium using a transfer vehicle, for distances not exceeding 25 km a charge applies for each transportation request. **\$300.00**

Transport of remains between 10 p.m. and 6 a.m. (in addition to Transport remains)

This fee is charged for removals that occur between the hours of 10 p.m. and 6 a.m.) **\$200.00**

Basic preparation of remains *(requires Facilities for preparation / embalming / shelter)*

The preparation of the body for placement into the casket, including bathing, dressing and the setting of facial features for identification or viewing without embalming. This will also include the removal of pacemaker or other implants for cremation. **\$100.00**

Embalming of remains *(in addition to basic preparation of remains)*

Embalming is the process of replacing blood and bodily fluids with chemical preservatives. It is a process of sanitation, restoration and temporary preservation. Embalming is not legally required but may be recommended to preserve the body between the time of death and the visitation or disposition of the deceased. Our professional funeral directors will make a recommendation based on the condition of the body and expected service needs. **\$500.00**

Embalming following an autopsy

\$600.00

Staff services for visitation

Staff to coordinate and oversee the visitation (informal gathering) at our premises or at an offsite location. **\$200.00 - \$600.00**

Additional charge for staff for additional visitation period(s) will be charged at \$150.00 per hour.

Staff services for ceremony and/or burial

Staff to coordinate and oversee the ceremony or memorial at our premises or at an offsite location for a period of up to 2 hours. **\$200.00**

Additional charge for staff for time period over 2 hours will be charged at \$150.00 per hour.

Staff Services for Reception

Staff to oversee and assist with on site reception for a period of up to 2 hours. **\$200.00**

Additional charge for receptions lasting over 2 hours will be charged at \$150.00 per hour.

Facilities for preparation/embalming/shelter

Facilities used to prepare, embalm and/or shelter the body; this charge applies whenever the body is at our facility for any purpose. **\$250.00 - 500.00**

Facilities and/or Equipment for visitation (requires Staff services for visitation)

Designated facilities used for public visitation and one hour of family visitation. **\$300.00 - \$900.00**

Minimum charge of \$200.00 for a one hour private family viewing.

Additional charge for facilities for additional visitation period(s) will be charged at \$100.00 per hour.



Facilities and/or Equipment for ceremony (requires Staff services for ceremony)

Designated facilities at our Funeral Home used for the ceremony or memorial service. This includes use of the building for up to 2 hours per ceremony. Equipment needed for a ceremony to be held at an offsite location. **\$200.00**

Additional time will be charged at \$100.00 per hour.

Delayed burial

This fee will apply when the burial does not take place immediately following the funeral or memorial service. This could be due to the cemetery being closed during the winter months, or having a reception following the ceremony. **\$250.00**

Spring interments will not be scheduled for a Saturday, Sunday or a Statutory Holiday.

Weekend/Holiday surcharge

This fee will apply for any services offered by our Funeral Home (visitation, funeral or memorial service, celebration of life, burial, etc.) held on a weekend (Saturday and/or Sunday) or a holiday. This fee will be charged on a per day basis. **\$500.00 per day**

Delayed memorial visitation and/or memorial service

This fee is charged when families choose to delay a memorial visitation or memorial service for longer than 7 days after the date of death. **\$500.00**

Delayed visitation and/or service with embalmed remains

This fee is charged when families choose to delay a visitation and/or service with embalmed remains present for longer than 5 days after the date of death. **\$150.00 per day**

Reception facilities

Use of facilities for a reception following the ceremony or memorial service, which includes the set up of the facilities, the use of the facilities and amenities for up to 2 hours. **\$200.00**

Additional time will be charged at \$100.00 per hour.

SOP Permit

Coordinating and obtaining a Special Occasion Permit and necessary supplies. This one-time charge covers insurance for the event, smart serve staff at the Funeral Home, the pick-up, payment and return of all alcohol and supplies. This does NOT include the cost of the SOP, the cost of the alcohol or the supplies. These expenses will be billed as a disbursement. Please note some off-site locations require their own paid staff and this cost will also be billed as a disbursement expense. **\$250.00**

Funeral Coach (up to 25 km)

\$250.00

Clergy/Lead Vehicle (up to 25 km)

\$100.00

General Duty Vehicle (up to 25 km)

\$300.00

Additional mileage- mileage travelled beyond 25 km from our facility will be charged at \$2.50 per km for funeral coach and \$1.75 per km for all other vehicles.

Full Tribute Package Includes guest/register book, up to 100 colour memorial folders and up to 100 Thank You cards, 1 Memorial Photo Slideshow **\$250.00**

Deluxe Tribute Package: Includes custom guest/register book, up to 100 colour memorial folders and up to 100 Thank You cards, 1 Memorial Photo Slideshow **\$300.00**

Standard Register book	\$75.00	Production of photo slideshow (up to 50 photos)	\$125.00
Deluxe Register book	\$175.00	Additional photos (over 50 photos)	\$1.00 per photo
Colour Memorial Folders	\$1.00 per card	Additional copy of photo slideshow (DVD or USB)	\$20.00
Thank You card and envelope	\$1.00 each	Legacy photo tribute book	\$125.00
Video recording of service (on or offsite)	\$200.00	Uploading of photo slideshow or recording of service to the Funeral Home website	No Charge

Multiple division of cremated remains – charged when more than one urn/container is being used to hold cremated remains **\$75.00**

Placement of cremated remains into jewelry not purchased at MWFH **\$25.00 per item**

Shipment of cremated remains within Ontario **\$95.00**

Refundable Deposit for Cremated Remains – When human remains are to be cremated, payment of a refundable deposit may be required. If the cremated remains are not claimed within one year of the cremation, the deposit may be used to inter the cremated remains in common ground in a cemetery of the funeral home’s choosing. If the cremated remains are claimed before they are interred, the deposit will be refunded. **\$350.00**



PACKAGE PRICES

*****Early Pay Discount pricing is applicable on all Packages
if account is paid in FULL within 15 days from the date of the contract*****

Plan A - Visitation and Ceremony over 3 days

One hour of family visitation and up to eight hours of public visitation over the course of two days.
Funeral Service to be held the following day (either at our premise or off site).

Early Pay Discount **\$6,575.00**
\$6,350.00

Plan B - Visitation and Ceremony over 2 days

One hour of family visitation and up to four hours of public visitation on one day.
Funeral Service to be held the following day (either at our premise or off site).

Early Pay Discount **\$6,075.00**
\$5,850.00

Plan C - Visitation and Ceremony over 1 day

One hour of family visitation and up to two hours of public visitation with
Funeral Service to be held immediately following visitation (either at our premise or off site).

Early Pay Discount **\$5,575.00**
\$5,350.00

Plan D - Cremation with Memorial Ceremony

Memorial Service (either at our premise or off site) for up to two hours.

Early Pay Discount **\$4,075.00**
\$3,925.00

Plan E - Direct Burial with Graveside Service

Direct burial with a graveside service. No viewing.

Early Pay Discount **\$4,375.00**
\$4,275.00

Plan F - Direct Cremation with Graveside Service

Direct cremation with a graveside service. No viewing.

Early Pay Discount **\$3,725.00**
\$3,650.00

Plan G - Direct Burial

Direct burial. No viewing and no service.

Early Pay Discount **\$3,150.00**
\$3,100.00

Plan H - Direct Cremation

Direct cremation. No viewing and no service.

Early Pay Discount **\$2,200.00**
\$2,150.00

Service Packages as of September 1, 2025	Plan A	Plan B	Plan C	Plan D
Basic Professional Services	1425	1425	1425	1425
Coordinating activities, rites, ceremonies	550	550	550	550
Documentation - permits, forms, etc.	500	500	500	500
Transport remains - initial 25 km	300	300	300	300
Basic preparation of remains	250	250	250	250
Embalming of remains	500	500	500	
Staff services for visitation	600	400	200	
Staff services for ceremony and/or burial	200	200	200	200
Facilities for preparation/embalming/shelter	500	500	500	250**
Facilities for visitation	900	600	300	
Facilities and/or equipment for ceremony	200	200	200	200
Clergy/lead car	100	100	100	100
Funeral coach/conveyance vehicle	250	250	250	
General duty vehicle	300	300	300	300
Itemized Total	\$ 6,575.00	\$ 6,075.00	\$5,575.00	\$ 4,075.00
Early Payment Discount available if paid in full within 15 days	-225	-225	-225	-150
Package Price (if paid in full within 15 days)	\$ 6,350.00	\$ 5,850.00	\$ 5,350.00	\$ 3,925.00

Service Packages as of September 1, 2025	Plan E	Plan F	Plan G	Plan H
Basic Professional Services	1275	1275	600	600
Coordinating activities, rites, ceremonies	350	350		
Documentation - permits, forms, etc.	500	500	500	500
Transport remains - initial 25 km	300	300	300	300
Basic preparation of remains	250	250	250	250
Embalming of remains	500		500	
Staff services for visitation				
Staff services for ceremony and/or burial	200	200	200	
Facilities for preparation/embalming/shelter	250**	250**	250**	250**
Facilities for visitation				
Facilities and/or equipment for ceremony	200	200		
Clergy/lead car		100		
Funeral coach/conveyance vehicle	250		250	
General duty vehicle	300	300	300	300
Itemized Total	\$ 4,375.00	\$ 3,725.00	\$ 3,150.00	\$ 2,200.00
Early Payment Discount available if paid within 15 days	-100	-75	-50	-50
Package Price (if paid in full within 15 days)	\$ 4,275.00	\$ 3,650.00	\$ 3,100.00	\$ 2,150.00

****Plans D, E, F, G, and H are subject to an additional charge of \$250 for "Facilities for preparation/embalming/shelter" if the deceased is in our care for over 72 hours.**

DISBURSEMENTS

Disbursements are items arranged for and possibly paid for on your behalf by us. You are expected to pay for these items at the time the contract is entered into. The following are some items that are often identified as disbursements. All fees listed below are subject to change without notification (fees will change periodically from suppliers)

The following two fees are mandatory fees and charged on all funeral service contracts

Bereavement Authority of Ontario Consumer Protection Fee **\$30.00 no HST**

Municipal death registration fee – this is a fee charged by the local municipality to register a death. **\$35.00 no HST**

Below are disbursements that may be needed or selected

Cemetery Charges – each cemetery has their own fee structure and their fees will be quoted to you based on the services needed. **At cost**

Cremation Fee – Southwest Crematoriums Ltd. **At cost**

Coroner's cremation certificate – this is a fee charged by the coroner for issuing a certificate that allows cremation to take place. The fee is set by the Chief Coroner for Ontario. **\$75.00 no HST**

Clergy honorarium – this is an amount paid to the clergy for their services. We suggest an honorarium amount of \$200, but in some cases the amount is set by the clergy, in others it is an amount to be determined by you.

Suggested amount is \$200.00

Newspaper or radio notices – there are a number of local newspaper and radio options available to you.

Below is a list of common choices for our area.

Daily Newspapers

Owen Sound Sun Times (one announcement estimate only)	\$350.00
K-W Record (one announcement estimate only)	\$350.00
Toronto Star (one announcement estimate only)	\$600.00
Globe and Mail (one announcement estimate only)	\$1,000.00

Weekly Newspapers

Guelph Mercury (online announcement)	\$79.00
The Post (one announcement estimate only)	\$150.00
The Post with photo (one announcement estimate only)	\$170.00
Wellington Advertiser	\$100.00 or \$150.00
Dundalk Herald/Flesherton Advance	\$100.00

Radio

CKNX Radio (12:55 p.m.) one announcement	\$60.00
each additional announcement	\$40.00
CFOS Radio (approx. 11:55 a.m. and 4:55 p.m.)	
one announcement \$90.00	two announcements \$140.00
three announcements \$175.00	four announcements \$190.00

Organist or Bagpiper **\$75.00 - \$200.00**

Funeral Luncheons – pricing is per person rate and you are responsible to pay for the number that is arranged with the caterer. **\$10.00 - \$15.00**

special menu requests for funeral luncheon will be subject to special pricing

Tax

Harmonized Sales Tax (HST) at a rate of 13% is applicable to the Funeral Home fees, the merchandise and most cash disbursements and it will be added to the account for all applicable items. Generally, the items which are HST exempt are: coroner's cremation certificate and the municipal death registration fee. All other fees are subject to HST.

Payment, financing and funding

We are proud to offer various payment funding and financing options to our clients.

Payment

Unless otherwise specified, payment is due within 30 days of signing the contract. Payment may be made by cash, cheque or e-transfer. Payment plans are also available to meet most budgets. Financing charges apply to payment plans. Beyond the allotted time, interest will be charged at a rate of 2%, which is equivalent to 26.82% per annum (APR).

Assistance

Assistance with funeral expenses MAY be available through the Last Post Fund or with a County Social Services Department.

PREPAYMENT OPTIONS

Financing for prepayment plans

Our payment plans give you the option of making payments over time. We offer a competitive financing program, administration fees and interest rates. If you are prepaying for services or supplies, pre-authorized chequing is also available.

Funding

For your convenience, we offer two funding options when prepaying services or supplies. When prepaying, you pay for the services and supplies today and the money will be used to pay for the services and supplies when they are delivered at the time of death.

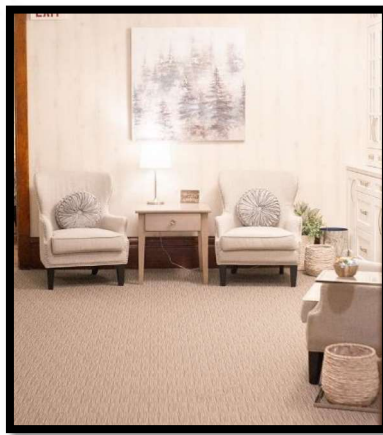
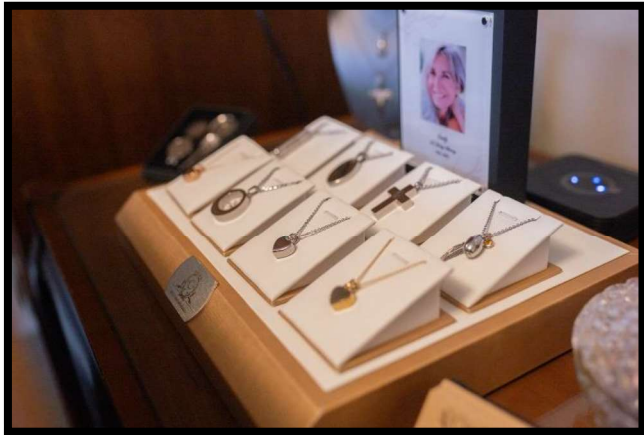
Trust

You may pay the money directly to us and we will place it in trust, where it will accrue interest until the contract is fulfilled (when the services and supplies are delivered) or the contract is cancelled. Funds placed in trust will cover the Funeral Home Professional Services and merchandise.

Insurance

You may purchase an insurance contract where the proceeds of the insurance contract will be used to pay for the services or supplies at the time they are delivered or the contract is cancelled. Other expenses, disbursement items, can be prepaid in an insurance funded policy.

Proudly Affiliated with
OFSA (Ontario Funeral Service Association)
GFD (Guaranteed Funeral Deposits)
FPC (Funeral Plans-Canada)
GBFSA (Georgian Bay Funeral Service Association)



Casket Selection

All caskets listed are "Adult" caskets. Youth and Plus Size caskets are available and further information and pricing is available upon consumer request.



The Windermere by Northern Casket
#960
100% Canadian solid oak
Triple coat, gloss finish
Toast velvet interior
Buntuffed panel

\$6,250.00



The Brunswick by Northern Casket
#651
100% Canadian solid oak
Stonecoat satin finish
Rosetan crepe interior
Vertically piped head panel

\$4,500.00



The Parham by Northern Casket
#658
100% Canadian solid oak
Triple coat, gloss finish
Rosetan crepe interior
Vertically piped head panel
Canadian Heritage Series corners and panel

\$4,025.00



The Cameron by Northern Casket
#702
100% Canadian solid maple
Triple coat, gloss finish
Rosetan velvet interior
Sunburst head panel

\$3,800.00



McCulloch-Watson
FUNERAL HOME LTD.

Casket Selection

All caskets listed are "Adult" caskets. Youth and Plus Size caskets are available and further information and pricing is available upon consumer request.



The Homestead by Northern Casket

#707

100% Canadian solid maple

Triple coat, gloss finish

Rosetan crepe interior

Sunburst head panel

Options- Toast velvet interior +\$350

\$3,725.00



The Rosehall by Northern Casket

#500

100% Canadian solid oak

Triple coat, gloss finish

Pink crepe interior

3 rose embroidered head panel

\$3,675.00



The Dixon by Northern Casket

#1311

100% Ontario solid pine

Triple coat, super gloss finish

Rosetan crepe interior

V-pleat head panel

\$3,450.00



The Alaster by Northern Casket

#630

Ash veneer sides/solid ash top and mouldings

Double coat, gloss finish

Rosetan crepe interior

Vertically piped head panel

\$3,250.00



McCulloch-Watson
FUNERAL HOME LTD.

Casket Selection

All caskets listed are "Adult" caskets. Youth and Plus Size caskets are available and further information and pricing is available upon consumer request.



The Minto by Northern Casket
#632
Poplar veneer sides/solid poplar top and mouldings
Double coat, gloss finish
Rosetan crepe interior
Sunburst head panel

\$2,875.00



The Haliburton by Northern Casket
#631
Oak veneer sides/solid oak top and mouldings
Stonecoat satin finish
Rosetan crepe interior
Sunburst head panel

\$2,875.00



The Carlton by Northern Casket
#33
Oak veneer sides/solid oak top and mouldings
Double coat, gloss finish
Rosetan crepe interior
Sunburst head panel

\$2,825.00



The Ember by Northern Casket
#440 *Painted grey, white or black*
Ash veneer sides/solid ash top and mouldings
Stonecoat satin finish
Ivory crepe interior
Flat head panel

\$2,425.00



McCulloch-Watson
FUNERAL HOME LTD.

Casket Selection

All caskets listed are "Adult" caskets. Youth and Plus Size caskets are available and further information and pricing is available upon consumer request.



The Carter (Light Walnut) by Northern Casket
#228LW
100% Ontario solid poplar
Stonecoat satin finish
Rosetan crepe interior
Sunburst head panel

\$2,300.00



The Carter (Natural) by Northern Casket
#228N
100% Ontario solid poplar
Stonecoat satin finish
Rosetan crepe interior
Button head panel

\$2,275.00



The Glentay by Northern Casket
#444
Oak veneer sides/solid oak top and mouldings
Stonecoat satin finish
Rosetan crepe interior
Button head panel

\$2,275.00



The Morden by Northern Casket
#446
Poplar veneer sides/solid poplar top and
mouldings
Stonecoat satin finish
Rosetan crepe interior
Plain head panel

\$2,250.00



McCulloch-Watson
FUNERAL HOME LTD.

Casket Selection


All caskets listed are "Adult" caskets. Youth and Plus Size caskets are available and further information and pricing is available upon consumer request.



The Cloth by Northern Casket
 #70 Navy
 #70 Plain Blue
 #70 Embossed Pink
 Particle board sides and lid, solid poplar mouldings
 Cloth covered
 White crepe interior
 Shirred head panel
Also available in White Lambskin, Embossed Blue, or British Plushette


\$1,650.00

CREMATION OPTIONS



The Simple Cloth by Northern Casket
 #40
 Particle board sides, lid and bottom
 50/50 lift off, flat top
 Blue cloth covered
 White taffeta interior
 Excelsior mattress

\$850.00



The Eden by Northern Casket
 #102
 100% Ontario solid poplar
 No finish
 Natural cotton interior
 Peg and dowel assembly
 (no metal, steel or plastics)

\$750.00

****Also suitable for natural burial****

Casket Selection

All caskets listed are "Adult" caskets. Youth and Plus Size caskets are available and further information and pricing is available upon consumer request.



The Basic by Northern Casket
#10
Particle Board
No finish, No bed, No interior **\$325.00**



Combo Tray by SWC
#SWC - 24 (24")
Wood base with cardboard top
No bed, No interior **\$250.00**

AVAILABLE IN OVERSIZE
Combo Tray Oversize 30" by SWC
#SWC - 30 (30") **\$325.00**

RENTAL CASKET for cremation only



The Homestead by Northern Caskets
#707
Ceremonial multi use rental casket
Solid maple exterior shell
*The exterior shell has been used before
and may be used again* **\$1,650.00**

Use of rental casket for a private viewing
of one hour at the Funeral Home **\$1,250.00**

The rental casket includes an adult standard single use container for final disposition, cremation only, (shown below) which is constructed of solid poplar with a tan crepe interior.



McCulloch-Watson
FUNERAL HOME LTD.

Vault Selection

All vaults listed are "Adult" vaults. Youth and Plus Size vaults are available and further information and pricing is available upon consumer request.




Liner by OSVW (Owen Sound Vault Works)
 #STL
 Concrete
 2 piece non-sealing unit

\$1,400.00




Standard Vault by OSVW
 #STV
 Concreate
 2 piece sealing unit
 Plaque with name and years of birth and death
 Painted gold

\$1,625.00



Oxford Vault by OSVW
 #OXV
 Concrete with inner fibreglass lining
 2 piece sealing unit
 Plaque with name and years of birth and death
 Painted gold

\$1,975.00



Grass and Device supplied by OSVW
 without the use of a concrete outer container

\$500.00

Holiday surcharge fee for outer containers
 For burials being held on a Statutory Holiday,
 an additional fee will be added to the selected
 outer burial container.

\$500.00



McCulloch-Watson
 FUNERAL HOME LTD.

Urn Selection

Further information, options and pricing is available upon consumer request.



Autumn Leaves Midnight **\$350.00**
 by Commemorate Group
 #A125
 Alloy, 196 cubic inches, threaded top
 6.57" x 6.57" x 10.51"

Autumn Leaves Midnight Keepsake **\$75.00**
 by Commemorate Group
 #K125
 Brass, 4 cubic inch, threaded top
 1.85" x 1.85" x 2.95"



Prairie Wheat **\$400.00**
 by Commemorate Group
 #A131
 Brass, 208 cubic inches, threaded top
 6.1" x 6.1" x 9.84"

Prairie Wheat Keepsake **\$75.00**
 #K131
 Brass, 4 cubic inch, threaded top
 1.81" x 1.81" x 2.83"



Divine Flying Doves **\$350.00**
 by Commemorate Group
 #A572
 Alloy, 214 cubic inches, threaded top
 6.89" x 6.89" x 9.84"

Divine Flying Doves Keepsake **\$75.00**
 by Commemorate Group
 #K572
 Alloy, 4 cubic inch, threaded top
 2.36" x 2.36" x 3.15"



Radiance Pewter **\$325.00**
 by Commemorate Group
 #A215
 Alloy, 205 cubic inches, threaded top
 6.3" x 6.3" x 10.43"

Radiance Pewter Keepsake **\$75.00**
 #K215
 Alloy, 4 cubic inch, threaded top
 1.77" x 1.77" x 2.76"

Urn Selection

Further information, options and pricing is available upon consumer request.



Soaring Doves **\$350.00**

by Commemorate Group
#A232
Brass, 220 cubic inches, threaded top
7.09" x 7.09" x 9.45"

Soaring Doves Keepsake **\$75.00**

by Commemorate Group
#K232
Brass, 5 cubic inch, threaded top
2.17" x 2.17" x 2.76"



Saturn Slate **\$350.00**

by Commemorate Group
#A127
Alloy, 193 cubic inches, threaded top
6.89" x 6.89" x 9.84"

Saturn Slate Keepsake **\$75.00**

by Commemorate Group
#K127
Alloy, 4 cubic inch, threaded top
2.24" x 2.24" x 2.95"



Radiance Gold **\$325.00**

by Commemorate Group
#A216
Alloy, 205 cubic inches, threaded top
6.3" x 6.3" x 10.43"

Radiance Gold Keepsake **\$75.00**

#K216
Alloy, 4 cubic inch, threaded top
1.77" x 1.77" x 2.76"



Saturn Bronze **\$350.00**

by Commemorate Group
#A126
Alloy, 193 cubic inches, threaded top
6.89" x 6.89" x 9.84"

Saturn Bronze Keepsake **\$75.00**

#K126
Alloy, 4 cubic inch, threaded top
2.24" x 2.24" x 2.95"



McCulloch-Watson
FUNERAL HOME LTD.

Urn Selection

Further information, options and pricing is available upon consumer request.



Elegant Leaf Emerald **\$350.00**

by Commemorate Group
#A540
Alloy, 208 cubic inches, threaded top
6.69" x 6.69" x 10.63"

Elegant Leaf Emerald Keepsake **\$75.00**

by Commemorate Group
#K540
Alloy, 4 cubic inches, threaded top
1.97" x 1.97" x 2.95"



Simplicity Pearl Tall **\$425.00**

by Commemorate Group
#A522
Brass and alloy, 232 cubic inches, threaded top
7.28" x 7.28" x 9.84"

Simplicity Pearl Tall Medium **\$225.00**

by Commemorate Group
#M522
Brass and alloy, 49 cubic inches, threaded top
4.72" x 4.72" x 6.1"

Simplicity Pearl Tall Keepsake **\$75.00**

by Commemorate Group
#K522
Brass and alloy, 4 cubic inches, threaded top
2.17" x 2.17" x 3.15"

Simplicity Pearl Tealight Urn **\$165.00**

by Commemorate Group
#T653
Brass and alloy, 25 cubic inches, threaded top
3.35" x 3.35" x 4.92"



Wings of Hope **\$575.00**

by Commemorate Group
#A1042
Brass and alloy, 220 cubic inches, threaded
screw bottom
8.27" x 10.63" x 9.06"

Wings of Hope Medium **\$325.00**

by Commemorate Group
#M1042
Brass and alloy, 25 cubic inches, threaded screw
bottom
4.53" x 6.5" x 4.53"

Wings of Hope Keepsake **\$125.00**

#K1042
Brass and alloy, 4 cubic inches, threaded screw
bottom
2.42" x 3.35" x 2.36"



McCulloch-Watson
FUNERAL HOME LTD.

Urn Selection

Further information, options and pricing is available upon consumer request.



Tree of Life **\$800.00**

by Commemorate Group
#A1100
Brass, 428 cubic inches, threaded screw on bottom
5.91" x 11.22" x 11.42"

could be used as a companion urn

Elegant Leaf Emerald Keepsake **\$175.00**

by Commemorate Group
#K1100
Brass, 7 cubic inches, threaded top
1.97" x 3.15" x 3.35"



Ember Urn **\$300.00**

by North Urn
#NU201
Ash, 200 cubic inches
Available in painted grey, white or black
9" x 6.5" x 6.5"



Cherry Signature Urn **\$450.00**

by North Urn
#NU213
Cherry, 206 cubic inches
10.4" x 7.25" x 6.12"



Contemporary Urn **\$450.00**

by North Urn
#NU206
Cherry or Maple, 186 cubic inches
10" x 8" x 8"



McCulloch-Watson
FUNERAL HOME LTD.

Urn Selection

Further information, options and pricing is available upon consumer request.



Camo Tambour Urn **\$425.00**
 by North Urn
 #NU212
 Oak top and bottom, cloth camo material, 282 cubic inches
 9.5" x 5.75" x 9.5"



Desman's Cherry **\$400.00**
 by Desman's Landing Creations
 #DLC - C
 Locally sourced solid cherry, 240 cubic inches, hard wax finish
 11.5" x 5.5" x 7.5"
 engraving not available



Metro Mantel Chest Urn **\$525.00**
 by North Urn
 #HM800-204
 Hardwood, 275 cubic inches, holds a 5 x 7 photo
 7.75" x 6" x 11.5"



Together Forever Companion Urn **\$800.00**
 by RK Productions
 #EA1007-E
 Stone, Canadian made, 420 cubic inches, bottom load
 9.75" x 7.5" x 9.75"

Engraving is available on most urns
 Names and Dates \$75.00
 North Urn – photo transfer or custom scene
 \$150.00



McCulloch-Watson
 FUNERAL HOME LTD.

Urn Selection

Further information, options and pricing is available upon consumer request.



Forever in Our Hearts \$525.00

by RK Productions
#EA1002-E
Stone, Canadian made, 210 cubic inches, bottom load
6.75" x 6" x 11"

Forever in Our Hearts Keepsake \$100.00

by RK Productions
#EA3002-E
Stone, Canadian made, 2 cubic inches, bottom load
2.25" x 2" x 4"



Forever in Our Hearts Photo Urn \$150.00

by RK Productions
#EA4002-E
Stone, Canadian made, 2 cubic inches, bottom load
8.5" x 2" x 5"



Forever in Our Hearts Candle Urn \$150.00

by RK Productions
#EA2002-E
Stone, Canadian made, 13 cubic inches, bottom load
4.5" x 6.5" x 4"



Mom - Keepsake Urn \$100.00

by RK Productions
#EA3011-E
Stone, Canadian made, 2 cubic inches
2" x 4"



Dad - Keepsake Urn \$100.00

by RK Productions
#EA3010-E
Stone, Canadian made, 2 cubic inches
2" x 4"

Also available with Grandma, Grandpa, Wife, Husband, Soulmate



Love's Story Keepsake Urn \$125.00

by RK Productions
#EA3010-E
Stone, Canadian made, 2 cubic inches
3" x 4.25"



McCulloch-Watson
FUNERAL HOME LTD.

Urn Selection

Further information, options and pricing is available upon consumer request.



Butterfly Sunset
by Eceer Company
#S9001

\$400.00

Real stone and polymer elm, 205 cubic inches,
9.75" x 7.5" x 5.75"
Fitting in 10" x 10" niches (fits 2 back to back in
a 12" x 12" niche)
100% Handmade in Canada



Guitar Sunset
By Eceer Company
#S9003

\$400.00

Real stone and polymer elm, 205 cubic inches,
9.75" x 7.5" x 5.75" Fitting in 10" x 10" niches
(fits 2 back to back in a 12" x 12" niche)
100% Handmade in Canada



- Motorcycle Sunset #S9002**
- Tree of Life Sunset #S9004**
- Dragonfly Sunset #S9005**
- Lighthouse Sunset #S9006**

Engraving available \$75.00



McCulloch-Watson
FUNERAL HOME LTD.

Urn Selection

Further information, options and pricing is available upon consumer request.

Scattering Tubes

by Commemorate Group

Full Size 200 cubic inches

\$125.00

Mini 20 cubic inches

\$75.00

Cardboard

Contains no metal or plastic components and can be recycled or composted after use. Suitable for "in-cabin" airline transportation.



#PI – AW or AWM Autumn Woods



#PI – BB or BBM Butterfly Blossom



#PI – SF or SFM Sunflower Fields



#PI – NH or NHM The 19th Hole



#PI – OS or OSM Ocean Sunset



#PI – MV or MVM Mountain View

Scattering tubes are durable, dignified and simple to use.



McCulloch-Watson
FUNERAL HOME LTD.

Urn Selection

Further information, options and pricing is available upon consumer request.

Personalization Options

We deal with a number of companies that offer unique personalization for keepsake items with or without cremated remains.

Additional options and pricing is available upon request.



Shown above is one example of blown glass jewellery that contains cremated remains.

Keepsake items available with laser imaging.
Available with or without a cremated remains compartment.

Loved Remembered

<https://www.lovedremembered.com/>



Life Expressions

<https://lifeexpressionsltd.org/>



West Coast Memorials

<https://www.westcoastmemorials.ca/>



Bailey and Bailey (a USA company)

<https://www.baileyandbailey.com/>



McCulloch-Watson
FUNERAL HOME LTD.

Urn Selection

Further information, options and pricing is available upon consumer request.



Cremation vaults not only protect the cremated remains of your loved one but they also allow for special items to be placed with the cremated remains at the time of the interment.



Urn Vaults



Memorial Urn Vault **\$225.00**
by Manchester Supply
G0000-20023
Granite Style, Sandstone Colour, Polyethelene
Available in Sandstone only
8.5" x 8.5" x 11"



Silhouette Urn Vault **\$300.00**
by Manchester Supply
G0000-20026
Granit Style, Grey Colour, Polyethelene
Also Available in Sandstone
12" x 12.5"

Urn Selection

Further information, options and pricing is available upon consumer request.



Tranquility Urn Vault **\$275.00**
 by Manchester Supply
 # G0000-20029
 Granite Style, Sandstone Colour, Polyethelene
 Also available in Grey
 10.75" x 16" x 10.25"



Countoured Urn Vault **\$325.00**
 by Manchester Supply
 # G0000-20013
 Granite Style, Sandstone Colour, Polyethelene
 Also available in Grey Colour
 14.50" x 15" x 14.50"



Aegean **\$725.00**
 by Haberer Interment Services
 Concrete encased with 2 layers of high impact
 Polystyrene
 White simulated marble exterior
 Personalized colour lid with image, name and
 years of birth and death



Bristol White Urn Vault **\$675.00**
 by Eckels
 # 011
 White Colour, Fibreglass
 White or gold resin plaques are included for
 personalization
 16" x 16" x 14"



McCulloch-Watson
 FUNERAL HOME LTD.